

**girl scouts**   
of the green and  
white mountains

# Girl Scout Tree Promise



GIRL SCOUTS OF THE GREEN AND WHITE MOUNTAINS

Serving New Hampshire and Vermont

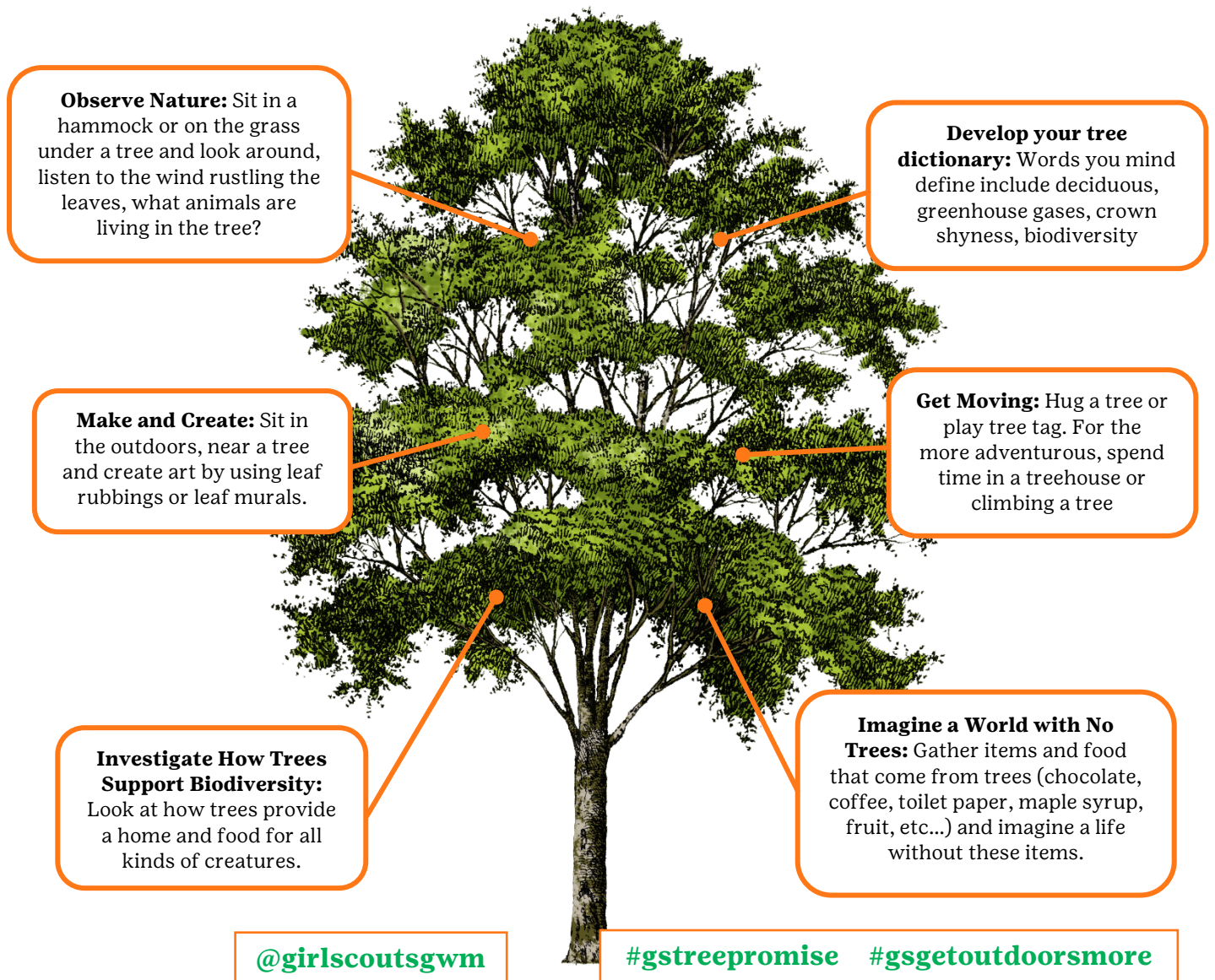
## **GIRL SCOUT TREE PROMISE: Plant, Protect and Honor 5 Million Trees by 2026**

**What is the Girl Scout Tree Promise?** Girl Scouts is joining forces with the Elliott Wildlife Values Project, American Forests, and SciStarter to launch a bold environmental and conservation initiative in April 2021. Girl Scouts is setting out to plant 5 million trees in five years and to protect and honor new and existing trees. Not only is this great for wildlife, it will mitigate climate change and benefit our communities.

Girl Scouts everywhere are being called to help by planting, protecting, and honoring trees in their backyards, camps, communities, and states—across the country and even across the world. From Daisy through Ambassador Girl Scouts to adult members and partners, every member and friend of the Movement Is being asked to join. Five million trees is A LOT of trees, but TOGETHER we can do it! Here's how:

### **STEP 1: Take the Girl Scout Tree Promise**

Before you can plant, protect, or honor trees, you need to find out how trees help the environment. In this way, you will be better equipped to act as an environmental steward who makes a difference. Complete step 1 by doing one or more of the following activities on your own, with your troop or with your family. Take a photo and submit on social media tagging [@girlscoutsgwm](#) [#gstreepromise](#) [#gsgetoutdoorsmore](#)



## **STEP 2: Protect and Honor Trees**

Trees need protection to thrive—if they're threatened, they can't just move somewhere else. Protecting existing trees, and trees that have just been planted, from invasive species, illness, habitat loss, or destruction is essential to their ability to combat climate change. Honoring trees is a great way to raise awareness about the important role they play in our environment, communities, and history. By learning about and honoring the trees in your area, you are creating a relationship with them. By raising awareness in the community, you are protecting trees and encouraging others to protect trees, too.

Complete step 2 by doing 1 or more of the following activities on your own, with your troop or with your family. Take a photo and submit on social media tagging @girlscoutsgwm #gstreepromise #gsgetoutdoorsmore

**Complete a citizen science project through SciStarter:** Participate in a citizen science project and collect data to help scientists with tree and climate research as part of the Girl Scout Tree Promise on SciStarter. Find a full list of tree-related citizen science projects on the SciStarter site at <https://scistarter.org/girlscouts-trees>.

**Connect with others to protect trees in their community:** Seek out community groups and organizations (conservation commissions, land protection agencies) already working on tree protection in your community. Find out the projects they're working on and see if there are any ways to support them. Find potential groups to work with by looking for tree identification tags along commercial sidewalks, in parks, along walking trails, and other places.

**Identifying trees:** By using a tree identification guidebook or app, head outside to a park or trail and practice identifying the trees in your area. Check out the Badge Activity Stations and Nature Trails at our GSGWM properties to learn to identify local trees on our properties.

**Doing some tree math:** Calculate how old a tree was by counting the rings in a cross section of the trunk or measuring the circumference of the trunk. Or figure out how tall a tree is by using shadows. Check out the Nature Trails at our GSGWM properties to practice Dendrochronology activities throughout all the GSGWM properties.

**Discovering trees' special role across cultures:** All around the world, communities have been honoring special trees throughout history. Indigenous Peoples have used and honored certain kinds of trees for housing, transportation, and even healing. Some cultures even have festivals to honor certain trees. For example, cherry trees are honored in the spring with cherry blossom festivals. Choose a kind of tree, a place, or a community and explore how their trees are honored.

### **Get Your Patch!**

**Congratulations!** Once you make the Girl Scout Tree Promise and complete at least one activity per step, you can post your photos on social media and submit a summary with your photos to the council at [customercare@girlscoutsgwm.org](mailto:customercare@girlscoutsgwm.org). Then, use the [GSUSA link](#) to get your patch and wear it proudly!