

girl scouts   
of the green and  
white mountains

# Troop Camping Guide









# What's Inside

## Table of Contents

Troop Camping .....	4
How to Reserve a GSGWM Property Site .....	6
To make a reservation .....	6
Outdoor Skills Trainings .....	6
Training Requirements for Girl Scout Groups .....	7
Reserving Properties for Meetings and Camporees .....	7
Our Properties	
Camp Farnsworth .....	8
Year-round Meeting and Sleeping Spaces ...	9
Seasonal Sleeping Spaces .....	10
Primitive Sites .....	12
Seasonal Spaces .....	13
Property Amenities .....	14
Specialist Activities .....	16
Equipment Rentals .....	18
Rental Fees .....	18
Camp Kettleford .....	20
Year-round Meeting and Sleeping Spaces ...	21
Seasonal Sleeping Spaces .....	22
Property Amenities .....	22
Specialist Activities .....	24
Equipment Rentals .....	26
Rental Fees .....	26
Camp Seawood .....	27
Year-round Meeting and Sleeping Spaces .....	28
Seasonal Sleeping Spaces .....	29
Property Amenities .....	29
Specialist Activities .....	31
Equipment Rentals .....	32
Rental Fees .....	32
Camp Twin Hills .....	33
Year-round Meeting and Sleeping Spaces .....	34
Seasonal Sleeping Spaces .....	35
Seasonal Spaces .....	35
Property Amenities .....	36
Specialist Activities .....	37
Equipment Rentals .....	38
Rental Fees .....	38



# Troop Camping

Troop Camping is an essential part of the Girl Scout experience. As your Girl Scouts move from Explore Out or Cook Out and are ready for Sleep Out and Camp Out, explore the GSGWM properties for lodges, Adirondacks, cabins, tents, and primitive sites where your Girl Scouts can try new outdoor skills. This Troop Camping Guide shows each property, the specialist activities available, and the equipment your troop can rent to round out your camping experience.

Not ready to try camping on your own? Check out staffed camping events like Ready, Set, Go Camping, or Enchanted Forest Overnight to try it out with out staff on hand to help.

## Outdoor Progression

Progression allows girls to learn the skills they need to become competent in the outdoors, including how to plan and organize outdoor activities. Acknowledge a girl's mastery of an outdoor skill and invite her to challenge herself further by taking that next step up and out! Outdoor fun can be endless when girls lead.







Camp Farnsworth's four-sided climbing tower showing the Giant's Ladder, short climbing wall and cargo net.



# How to reserve a property for Troop Camping

## To make a reservation

To get started, visit our website at [girlscoutsgwm.org/property](http://girlscoutsgwm.org/property).

1. Choose your location and rental items from the GSGWM Troop Camping Guide.
2. Check the Property Reservation Calendar online at [bit.ly/gsgwm\\_availability](http://bit.ly/gsgwm_availability) to see if your dates and campsite are available.
3. Note that your reservation must be made a minimum four weeks in advance.
4. Complete the GSGWM Troop Camping Reservation form online for your location including your First Aid/CPR, GSGWM training, and payment information. Incomplete forms will delay processing.

Reservations are processed every Tuesday in the order in which they were received, and confirmations are sent by email. Any building or gate codes are emailed the Thursday before your rental to the person responsible for the rental.

### **Troop Camping cancellations**

Troops can cancel their camping reservation by contacting Customer Care in writing at any time. See the date cutoffs below for refund eligibility.

- Up to four weeks prior to the reservation date: Refunded in full.
- Within four weeks of the reservation date: Refund of specialist and equipment fees only.

## Outdoor Skills Trainings

### **Outdoor Adventure Workshop (OAW)**

This workshop is a 1.5 hour, free online training to learn and review basic outdoor skills using GSUSA outdoor resources. Volunteers with OAW training can lead a simple fire, cook a one-pot meal or cook over a fire using sticks (think s'mores!), and sleep for one night in lodges, Adirondacks, or cabins on our GSGWM properties. This training is available any time you are ready to take it at [bit.ly/gsgwm\\_oaw](http://bit.ly/gsgwm_oaw).

### **Basic Outdoor Living Skills (BOLS)** (Prerequisite: none)

This is an overnight or blended learning training that includes outdoor cooking, camping, orienteering, whittling, fire-building, and skills needed to camp for multiple nights in developed campgrounds, or use tents, stoves, or advanced cooking methods with your Girl Scouts. This training is offered by volunteer trainers in local communities, and by the outdoor program team, mostly in spring and fall. New trainings are posted on our website as soon as they are available.

### **Advanced Outdoor Living Skills (AOLS)** (Prerequisite: none)

This workshop covers backpacking, winter camping, and canoe/boating camping. Outdoor Program staff offer this advanced overnight training, which covers safe use of stoves, backcountry trip planning, advanced navigation skills, and advanced shelters skills (tarps, hammocks, snow shelters). AOLS is offered every fall, alternating between backpacking and canoe training, and every other winter as a winter training.



## Training requirements for Girl Scout groups

The following chart provides the minimal training required in order to participate in outdoor camping. Before any sites can be reserved, we must have a record of training.

Group Activities	Training Required						
	GSUSA Successful Leader Learning Series	Current First Aid & CPR	Outdoor Adventure Workshop (OAW)	Basic Outdoor Living Skills (BOLS)	Advanced Outdoor Living Skills (AOLS)		
Day Outdoors w/ some outdoor skills (campfires, campfire cooking)	X	X	X	OR	X		
Indoor Overnight w/ some outdoor skills (campfires, campfire cooking)	X	X	X	OR	X	OR	X
Outdoor Camping (One night in an adirondack, cabin, or lodge with campfire and stick or one-pot cooking.)	X	X	X	OR	X	OR	X
Outdoor Camping (Two nights or more of camping in established campgrounds, in tents, with campfires, camp stoves, or other cooking methods. Water and restrooms available)	X	X			X	OR	X
Wilderness Camping (Primitive camping outside of established campgrounds, camping outdoors in winter conditions, backpacking or canoe camping)	X	X					X

## Reserving properties for meetings, camporees, and other events

GSGWM properties can be rented for up to 2 hours Monday-Thursday for meetings or a troop activity, or SU or other Girl Scout adult meetings. For Friday-Sunday rentals, multi-troop activities, or any rental over 2 hours, fees will apply and must be paid at the time of rental. Find the Troop Meeting rental form at [bit.ly/gsgwm\\_troopmeeting](http://bit.ly/gsgwm_troopmeeting).

Properties can be reserved for community camporees. More information and rental forms will be added to our website soon.

For questions or to reserve properties for other events, please contact our Program and Properties department by emailing [customercare@girlscoutsgwm.org](mailto:customercare@girlscoutsgwm.org).





# Camp Farnsworth

## Thetford, VT



Camp Farnsworth, a 200-acre facility that can accommodate up to 300 people, features a large pool, playing fields, a forest setting, and a 50-acre lake which can be used for swimming, canoeing, kayaking, and ice skating.

Camping facilities include small cabins, platform tents, and Adirondack shelters. All have beds with mattresses. Each unit has 7-8 cabins/tents and can sleep up to 32 people. All have unit shelters, drinking water and toilets (flush or composting). There are also two central shower houses.

Camp Farnsworth has several year-around buildings for overnights for up to 24 people, with indoor bathrooms and showers.





# Year-round Meeting and Sleeping Spaces

## Recreation Building

The recreation building is ADA compliant, can hold up to 210 people (seated), and features a stage for activities and performances, flush toilets, a shower, and a kitchenette area with a refrigerator and microwave. The upstairs lounge area is a quieter space for reading or board games. The recreation building can sleep up to 24 people on mattresses on the floor.



## Bunkhouse

The Bunkhouse can sleep up to 24 total: 16 on bunk beds in an upstairs sleeping area and four each in two smaller rooms, one upstairs/one downstairs. The Bunkhouse includes a warming kitchen, tables and chairs, two full indoor bathrooms with showers and flush toilets, and is ADA compliant. There is a large meeting or living room with round tables that seats up to 24 for group meetings or activities; comfortable couches invite lounging.





## Seasonal Sleeping Spaces

### Anakoosh Cabin

Anakoosh is located in the heart of main camp, and sleeps 6 on bunk beds in a small cabin with a kitchen, bathroom, and shower. The wide porch invites sitting, and the outdoor firepit provides a gathering area.



### Lakeside and Hillside Condos

Each condo unit sleeps 4, with nearby access to a shower house and bathroom, and electricity. The Hillside Condos are right in main camp, and the Lakeside Condos have a view of the lake and a firepit with chairs.



Lakeside Condos



Hillside Condos



Lakeside Condos



Hillside Condos





## Seasonal Sleeping Spaces

### Units: Cabins

Kaflik, Tree Houses and Sky Meadow provide cabins for 5-12 girls to sleep. Kaflik cabins sleep 5 each all on lower bunks. Treehouses have a majority of upper bunks in each cabin. Sky Meadow has a unique design of upper and lower bunks.

Kaflik and Tree Houses have two fire circles, and are close to restrooms and the main shower house.



Kaflik



Tree Houses

### Units: Platform Tents

Yaryole and Ojacle provide large platform tents that sleep 4 each on cots with mattresses. Roll up the sides for cross-breezes, or leave them down to sleep in!



### Units: Adirondacks

Yolacan, Tall Timbers, and Windigo have Adirondacks - three-sided shelters with the fourth side screened in. Bunks are a combination of upper and lower; most cabins sleep 5. Tall Timbers has 2 fire circles; Windigo and Yolacan have 1 fire circle. Windigo and Tall Timbers each have their own composting toilet system (CTS) restroom in their unit.



### Units: Tentalows

Tovariche boasts unique tentalows - cabins with screen on two sides for great views! 4 cabins sleep 6; 2 cabins sleep 2; and one cabin sleeps 8, all in bunk beds. This central unit is located close to the main shower house and flush restrooms. Tovariche has 2 fire circles.





## Primitive Sites

### Seven Gables

The backpack or hike is worth the view from Seven Gables! A rare “bald” or open hillside in an otherwise forested landscape, Seven Gables has terrific views and sunsets. An Adirondack shelter, fire pit, and camper’s latrine make this primitive site comfortable for groups to spend the night, or bring your tent or hammock.



### Far Water

Load up your canoe, and paddle across Lake Abenaki to the Far Water primitive site! You’ll get a whole new view of the lake and camp, and a fire circle and camper’s latrine add comfort to your primitive canoe camping experience. Lots of great hammock sites, and space for tents, too.





## Seasonal Spaces

### Dining Hall and Kitchen

The dining hall overlooks Lake Abenaki, has a seating capacity of up to 200 people, boasts a beautiful fireplace, includes a fully furnished commercial kitchen, and is ADA compliant. Tables seat 8-10 on rustic benches and can be arranged to be single or in a line for banquet-style functions. A wide porch allows for outdoor dining or troop gatherings.



### Joiner Building

Bring your crafts, or use this divided indoor space for meeting space or activities. Each side of the Joiner is screened in with running water and picnic tables, as well as bench and table seating around the walls - space for at least 20 people to comfortably spread out.

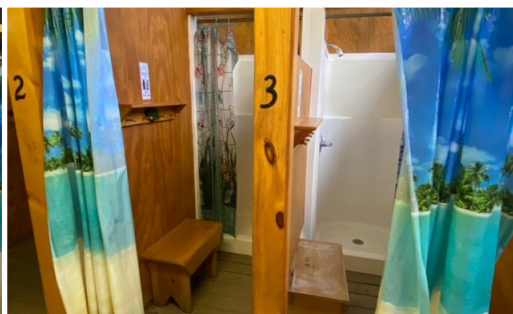




# Property Amenities

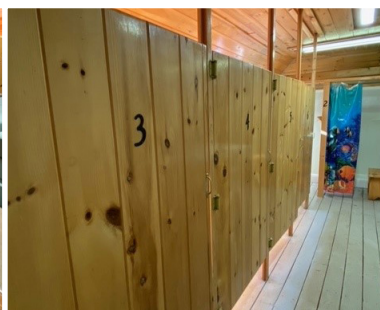
## Main Shower House

No need to rough it at Camp Farnsworth! The large Main Shower House is ADA compliant and has flush toilets, showers, and electricity. The Main Shower House can be divided to be coed or to provide private shower space. Located near the center of camp, the Main Shower House is closest to Kaflick, Yaryole, Tovariche, Tree Houses, Tall Timbers, and Windigo.



## Money Sunk Shower House

The smaller of Camp Farnsworth's two shower houses, Money Sunk has flush toilets, showers, and electricity. Money Sunk is closest to Sky Meadow, Ojackle, and Yolacan.





# Property Amenities

## Corky's Fire Circle

Rebuilt in 2018, Corky's Fire Circle features wooden bleachers that overlook the horse pasture and barn and seats up to 100 people around the fire circle.



## GaGa Pit

GaGa is a popular game! Using a playground ball, girls start at the walls of the GaGa pit, then roll the ball to try to get each other "out." The ball has to roll and stay below the knees!



## Nature Trail

The nature trail is a guided trail with informative signs and activities to explore the amazing natural place you are in! Hike it in the daytime - and then hike it at night!



## Badge Activity Center

Badge activity centers at camp show a badge that can be worked on while on property without any extra materials! Badges change seasonally, and are located throughout the camp.





## Specialist Activities

### Archery Range

(Open April 15 - October 15)

Rent with our facilitator or provide your own qualified instructor. Rental fee includes bows, arrows, targets, and arm guards.



### Lake Abenaki Waterfront Swimming Area

(Open June 15 - September 15)

Lake swimming can't be beat! Swim with your own lifeguard and watchers, or rent the waterfront with our lifeguards.



### Lake Abenaki Boating Area

(Open June 15 - September 15)

Canoe or kayak on Lake Abenaki with your boating qualified instructor or with our specialist.



### Lake Abenaki Paddleboards

(Open June 15 - September 15)

Try out paddleboarding at Lake Abenaki. Rental includes lesson and boating specialist.





## Specialist Activities

### Low Ropes Course & Team Building Games

(Open April 15 - October 15)

Untangle a path through the spider web, or try to get across the bouldering wall. Practice communication and team building in activities led by our facilitator. *Best for Brownies and Juniors.*



### Camp Farnsworth Swimming Pool

(Open May 15 - September 15)

The saltwater heated swimming pool is up to 5 feet deep and has lights for nighttime swimming. Rent the pool with our lifeguard or bring your own lifeguard and watchers.



### Climbing Wall

(Open June 15 - September 15)

Challenge yourself on the 30-foot-high climbing wall! Rent with our facilitator for maximum fun. *Best for Juniors and older.*





## Equipment Rentals

Equipment can be rented for use at Camp Farnsworth for a nominal fee. The following equipment is available:

Coleman 4-person dome tents	\$10 per tent	GPS Units	\$5 per GPS
Troop Cook Kit	\$10 per kit	Bird Behaviors Kit (includes 6 binoculars)	\$10
Jackknife Kit (contains 12 jackknives)	\$10	Snowshoes	\$5 per set
Compass/Orienteering Kit (contains 12 compasses)	\$10	Internal or External Frame Backpacks	\$5 per backpack
Geocaching Kit (includes one GPS unit)	\$10		

## Overnight Rental Fees

Rental fees are listed on the GSGWM Troop Camping Reservation Form. Overnight rentals are from 5:00 PM to 11:00 AM each night; rentals over consecutive days include the period from 11:00 AM to 5:00 PM between rentals.

Rental of each sleeping building or unit comes with a fire circle, campfire wood, and includes use of exclusive or shared restrooms and water source (except primitive sites).

Common areas in camp (pavilions, main campfire rings, playing fields, GaGa pit, etc.) are shared between all rental groups staying overnight. Please supervise your Girl Scouts in these shared areas and encourage your Girl Scouts to use words and show actions that follow the Girl Scout Promise and Law.

Rental of Specialist Activity Areas is limited to the times your group has reserved them for; and multiple groups on property may have multiple rentals at different times.

Rented equipment will be left for you at your rental space; please return them clean and dry in your rental space when you leave.

### Year-Round Heated Buildings:

Bunkhouse	\$200
Rec Building	\$145

### Platform Tents

Ojakle	\$50
Yaryole	\$50

### Primitive Sites

Seven Gables	\$25
Far Water	\$25

### Cabins, Adirondacks, Tentalsows

Anakoosh	\$100
Kaflik	\$80
Tree Houses	\$80
Tovariche	\$80
Tall Timbers	\$60
Windigo	\$60
Yolacan	\$60
Sky Meadow	\$50
Lakeside Condos	\$40
Hillside Condos	\$40





Girls enjoy the heated saltwater pool at Camp Farnsworth.



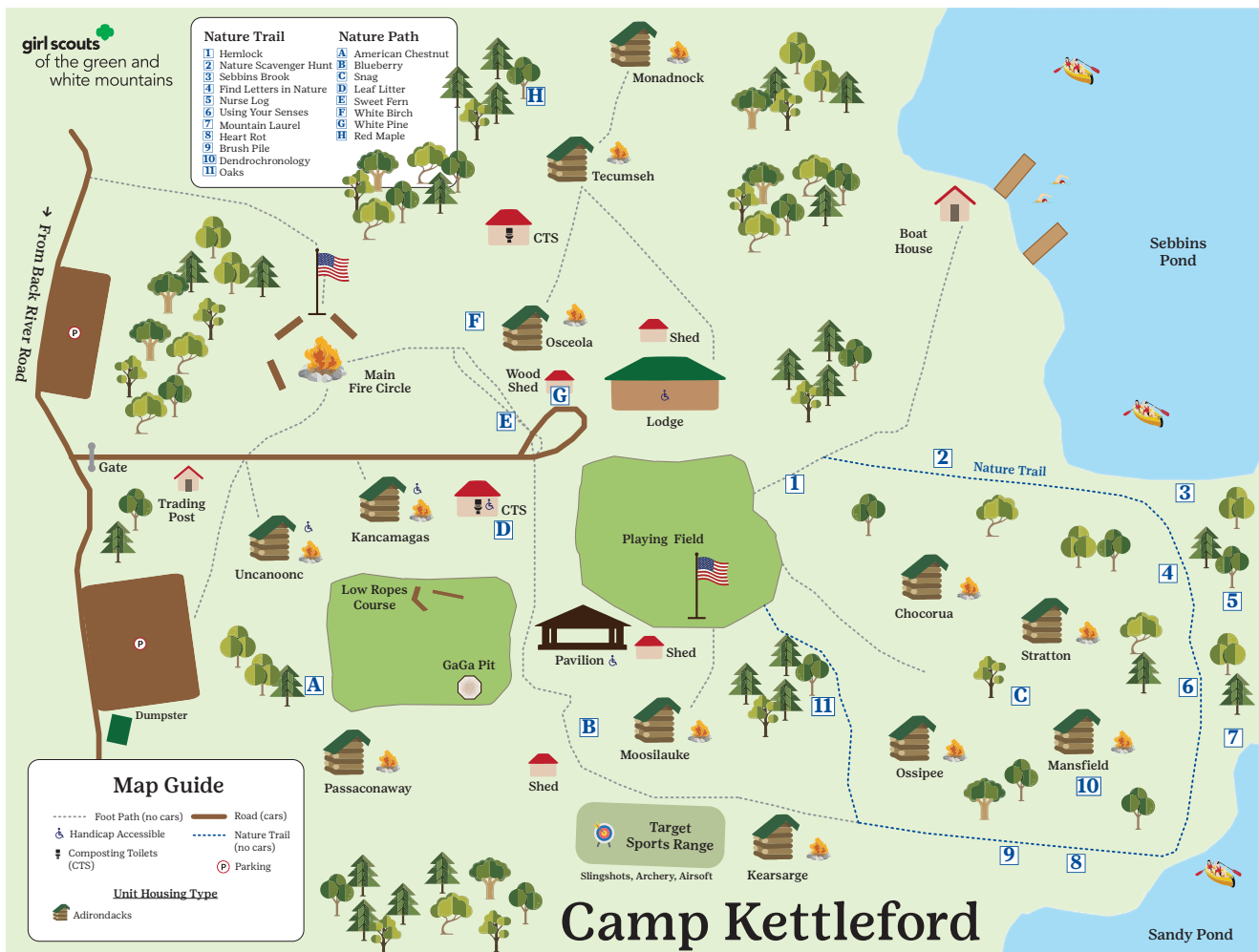
# Camp Kettleford

## Bedford, NH



Camp Kettleford is located on 30 forested acres along the shores of Sebbins and Sandy Ponds, just minutes from Manchester, New Hampshire.

Camping facilities include 12 units, each with a large screened Adirondack shelter that can sleep up to 10-12 Brownies or 5-10 older girls. There is space near each shelter to pitch tents. Each unit has a fire pit and picnic tables. The Uncanoonuc and Kancamagus units and the Lodge are barrier-free and wheelchair accessible. There are two centrally located composting toilet system (CTS) buildings.





## Year-round Meeting and Sleeping Spaces

### Lodge

The lodge sleeps up to 16 people. Four people can sleep on two bunk beds with mattresses in a smaller room and 12 people on mattresses on the floor in the main room. The covered porch and small screened-in porch at the side of the lodge provide a comfortable place for activities rain or shine.

The full residential kitchen provides eating dishes and utensils, and cookware (pots and pans) for up to 16 people. There is a microwave, refrigerator, and electric stove.

For a great winter weekend, try camping in the lodge in the snow! The lodge is heated with an indoor woodstove (wood provided); and troops will need to bring their own water as the water in the lodge is shut down over the winter (November 1 - April 1). From the cozy lodge you can venture out to snowshoe the trails, have winter campfire singalongs, or enjoy cocoa bundled up on the porch.



**More photos coming soon.**



## Seasonal Sleeping Spaces

### Adirondack Units

Adirondacks are three-side shelters with a screened in front. Each shelter can sleep up to 10-12 Brownies or 5-10 older girls. There is space near each shelter to pitch tents. Each unit has a fire pit with campfire wood provided and picnic tables. Uncanoonuc and Kancamagus units are barrier-free and wheelchair accessible. Adirondacks at Camp Kettleford are named after mountains in our NH and VT council!



## Property Amenities

### Pavilion

The pavilion has four picnic tables that can seat up to 32 people, includes electricity and a fireplace, and is ADA compliant. On rainy days, the pavilion is a great space to warm up with the fire or do crafts - or move the picnic tables and play games!





## Property Amenities

### Main Fire Circle

The main fire circle is a shared space at Kettleford, and a great place to meet other troops for a sing-off, or use the stage to perform skits and songs for a crowd.



### GaGa Pit

GaGa is a popular game! Using a playground ball, girls start at the walls of the GaGa pit, then roll the ball to try to get each other "out." The ball has to roll and stay below the knees!



### Nature Trail

The nature trail is a guided trail with informative signs and activities to explore the amazing natural place you are in! Hike it in the daytime - and then hike it at night!



### Badge Activity Center

Badge activity centers at camp show a badge that can be worked on while on property without any extra materials! Badges change seasonally, and are located throughout the camp.





## Specialist Activities

### Archery Range

(Open April 15 - October 15)

Rent with our facilitator or provide your own qualified instructor. Rental fee includes bows, arrows, targets, and arm guards.



### Low Ropes Course & Team Building Games

(Open April 15 - October 15)

Untangle a path through the spider web, or try to get across the bouldering wall. Practice communication and team building in activities led by our facilitator. *Best for Brownies and Juniors.*



### Sandy Pond Canoe Area

(Open June 15 - August 30)

Try out canoeing on tranquil Sandy Pond with your own qualified facilitator or with ours.





# Specialist Activities

## Sebbins Pond Waterfront: Funyaks

(Open June 15 - August 30)

Funyaks are stable boats that are fun for beginners to paddle. Rent with a boating specialist, or provide your own qualified specialist. *Best for Daisies, Brownies, and Juniors.*



## Sebbins Pond Waterfront: Swimming

(Open June 15 - August 30)

Swim in the marked swimming area with your own lifeguard and watchers, or rent the waterfront with our lifeguard.





## Equipment Rentals

Equipment can be rented for use at Camp Kettleford for a nominal fee. The following equipment is available:

Eureka 4-person Tents	\$10 per tent	Geocaching Kit (includes one GPS unit)	\$10
Troop Cook Kit	\$10 per kit	GPS Units	\$5 per GPS
Jackknife Kit (contains 12 jackknives)	\$10	Bird Behaviors Kit (includes 6 binoculars)	\$10
Compass/Orienteering Kit (contains 12 compasses)	\$10	Snowshoes	\$5 per set

## Overnight Rental Fees

Rental fees are listed on the GSGWM Troop Camping Reservation Form. Overnight rentals are from 5:00 PM to 11:00 AM each night; rentals over consecutive days include the period from 11:00 AM to 5:00 PM between rentals.

Rental of each sleeping building or unit comes with a fire circle, campfire wood, and includes use of exclusive or shared restrooms and water source (except primitive sites).

Common areas in camp (pavilions, main campfire rings, playing fields, GaGa pit, etc.) are shared between all rental groups staying overnight. Please supervise your Girl Scouts in these shared areas and encourage your Girl Scouts to use words and show actions that follow the Girl Scout Promise and Law.

Rental of Specialist Activity Areas is limited to the times your group has reserved them for; and multiple groups on property may have multiple rentals at different times.

Rented equipment will be left for you at your rental space; please return them clean and dry in your rental space when you leave.

### Year-Round Building:

Lodge \$85

### Adirondacks:

Monadnock	\$40	Chocorua	\$40
Tecumseh	\$40	Ossipee	\$40
Osceola	\$40	Stratton	\$40
Kancamagus	\$40	Mansfield	\$40
Passaconaway	\$40	Kearsarge	\$40
Moosilauke	\$40		



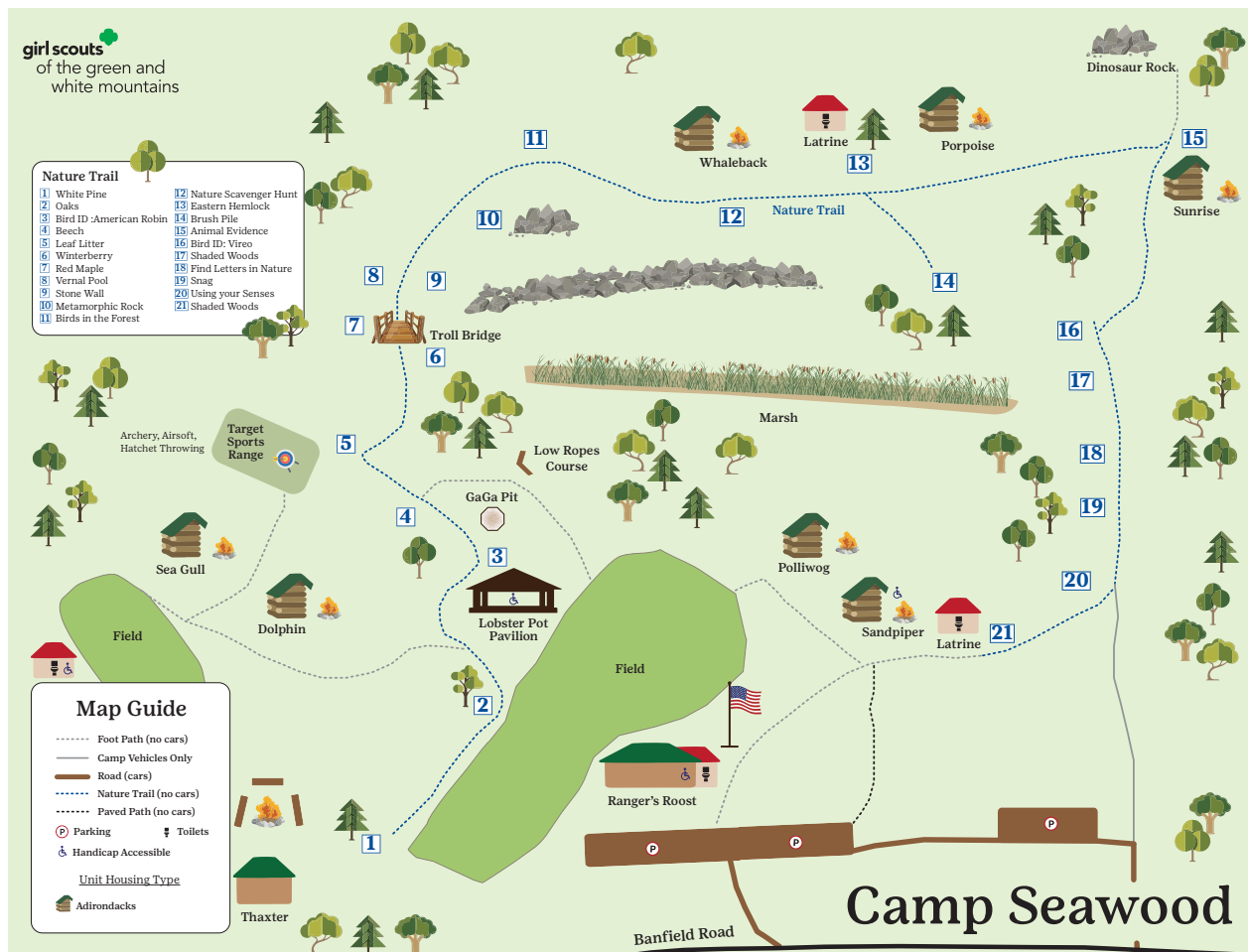
# Camp Seawood

## Portsmouth, NH



Camp Seawood is located on 38 acres of forest and wetlands on the outskirts of Portsmouth, approximately five miles from many New Hampshire beaches and minutes from downtown. Camp Seawood has two winterized buildings, Thaxter Lodge and Ranger's Roost.

Camping facilities include seven units, each with a large screened Adirondack shelter, picnic tables, and fire pits. Shelters sleep up to 10-12 Brownies or 5-10 older girls. There is a central bath house with flush toilets, and composting toilets (CTS) with running water near the outer units. There is space in each unit area to pitch tents. Sandpiper unit is barrier-free and wheelchair accessible.





## Year-round Meeting and Sleeping Spaces

### Ranger's Roost

Ranger's Roost sleeps up to 16 on bunk beds in the upstairs carpeted sleeping loft. A full kitchen has a refrigerator, standing freezer, two electric stoves, a microwave, and dishes and cookware for 16. There are tables and chairs in the downstairs great room. The bathroom has two showers and four toilets.



### Thaxter Lodge

Thaxter Lodge sleeps up to 16 on bunk beds, and includes a kitchenette with microwave, electric stove/oven and refrigerator. The kitchen has dishes and cookware to serve 16. Seasonal bathroom facilities with flush toilets (available May - October) are located outside near Thaxter Lodge.





## Seasonal Sleeping Spaces

### Adirondack Units

Seawood has 7 seasonal Adirondacks - three-sided buildings with a screened-in front and screen door. Suitable for sleeping 10-12 smaller campers, or 5- 10 older girls, the Adirondacks are placed far enough apart to be individual shelters for troops, and some are located close for a troop to use together. All units have picnic tables, a fire pit with nearby campfire wood, benches, and are near flush or composting toilets. Sandpiper unit is barrier-free and wheelchair accessible



## Property Amenities

### Lobster Pot Pavilion

The shared pavilion space at Seawood is the Lobster Pot, a covered pavilion centrally located in main camp. Picnic tables or benches fit comfortably underneath the shelter, or move the tables to enjoy a space for games when the weather is rainy.





## Property Amenities

### Main Fire Circle

The main fire circle allows groups of Girl Scouts to gather for sing alongs or to share skits, stories and s'mores. Campfire wood is provided in the nearby woodshed.



### GaGa Pit

GaGa is a popular game! Using a playground ball, girls start at the walls of the GaGa pit, then roll the ball to try to get each other "out." The ball has to roll and stay below the knees!



### Nature Trail

The nature trail is a guided trail with informative signs and activities to explore the amazing natural place you are in! Hike it in the daytime - and then hike it at night!



### Badge Activity Center

Badge activity centers at camp show a badge that can be worked on while on property without any extra materials! Badges change seasonally, and are located throughout the camp.





## Specialist Activities

### Archery Range

(Open April 15 - October 15)

Rent with our facilitator or provide your own qualified instructor. Rental fee includes bows, arrows, targets, and armguards.

**Photo coming soon.**

### Low Ropes Course & Team Building Games

(Open April 15 - October 15)

Untangle a path through the spider web, or try to get across the bouldering wall. Practice communication and team building in activities led by our facilitator. *Best for Brownies and Juniors.*



### Hatchet Throwing Range

(Open April 15 - October 15)

Take a lesson and try your skills at hatchet throwing. Practice scoring and use a bracket for a competition. *GSUSA Safety Activity Checkpoints require Girl Scouts to be at least in 6th grade for this activity.*





## Equipment Rentals

Equipment can be rented for use at Camp Seawood for a nominal fee. The following equipment is available:

Eureka 4-person Tents	\$10 per tent	Geocaching Kit (includes one GPS unit)	\$10
Troop Cook Kit	\$10 per kit	GPS Units	\$5 per GPS
Jackknife Kit (contains 12 jackknives)	\$10	Bird Behaviors Kit (includes 6 binoculars)	\$10
Compass/Orienteering Kit (contains 12 compasses)	\$10	Snowshoes	\$5 per set

## Overnight Rental Fees

Rental fees are listed on the GSGWM Troop Camping Reservation Form. Overnight rentals are from 5:00 PM to 11:00 AM each night; rentals over consecutive days include the period from 11:00 AM to 5:00 PM between rentals.

Rental of each sleeping building or unit comes with a fire circle, campfire wood, and includes use of exclusive or shared restrooms and water source (except primitive sites).

Common areas in camp (pavilions, main campfire rings, playing fields, GaGa pit, etc.) are shared between all rental groups staying overnight. Please supervise your Girl Scouts in these shared areas and encourage your Girl Scouts to use words and show actions that follow the Girl Scout Promise and Law.

Rental of Specialist Activity Areas is limited to the times your group has reserved them for; and multiple groups on property may have multiple rentals at different times.

Rented equipment will be left for you at your rental space; please return them clean and dry in your rental space when you leave.

### Year-Round Heated Buildings:

Ranger's Roost	\$175	Thaxter Lodge	\$125
----------------	-------	---------------	-------

### Adirondacks

Seagull	\$40	Sunrise	\$40
Dolphin	\$40	Porpoise	\$40
Polliwog	\$40	Whaleback	\$40
Sandpiper	\$40		



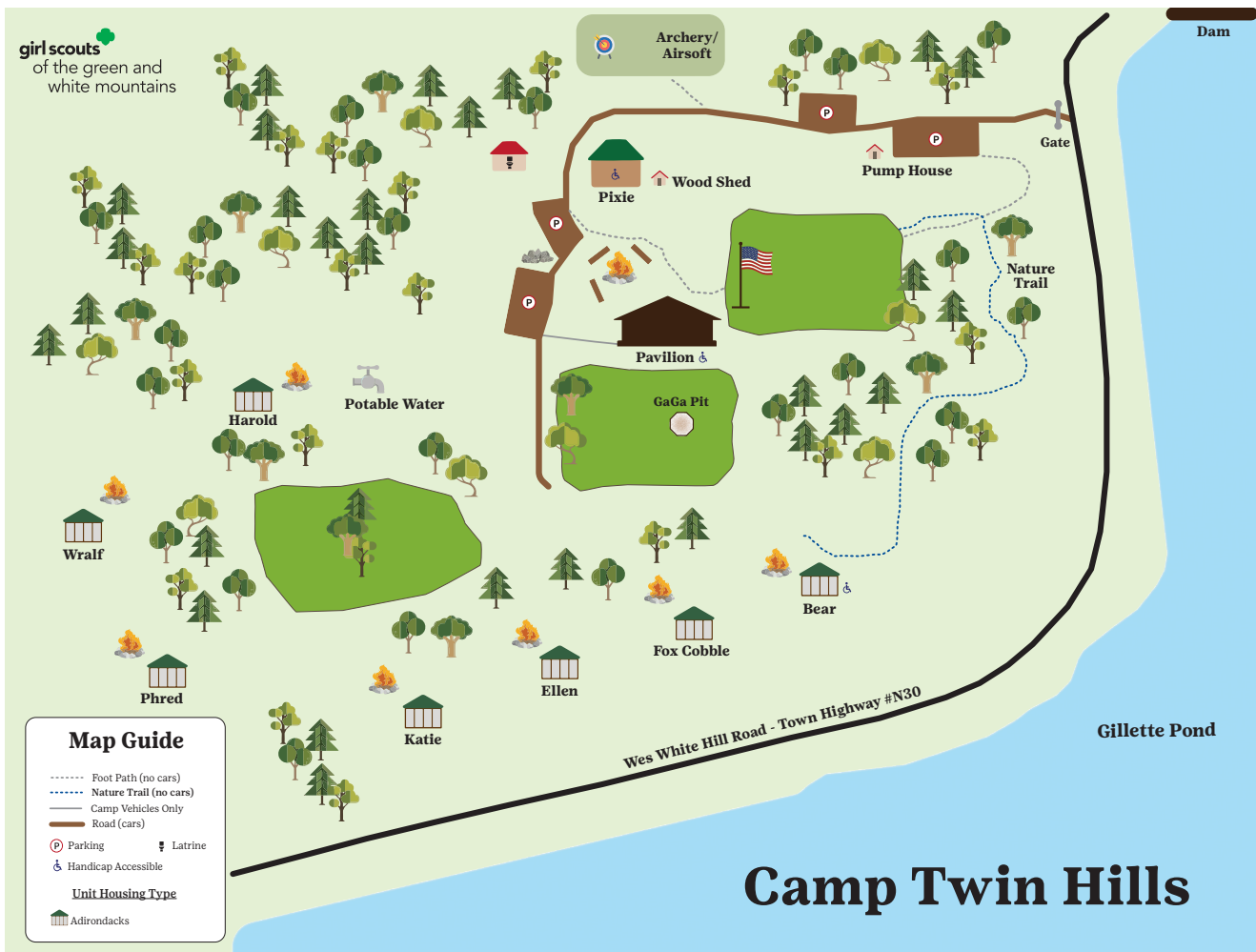
# Camp Twin Hills

## Richmond, VT



Camp Twin Hills is located in northwestern Vermont, midway between Montpelier and Burlington, in a largely wooded setting with an orchard and hiking trails.

Camp Twin Hills is a rustic site, with 7 Adirondack units, each with picnic tables, fire pits and campfire wood, and benches for seating. The Pixie cabin is a historic logging cabin with unique bed platforms which can be rented year round and is heated with a wood-burning stove. The shared pavilion is a unique open-air building with a stone fireplace and lots of space to gather out of the rain. There is ample space available to pitch tents.





## Year-round Meeting and Sleeping Spaces

### Pixie Cabin

The Pixie Cabin is an historic logging cabin, with unique platform sleeping along one wall, a refrigerator and electric stove. Up to 16 people can sleep in the ADA-compliant cabin. No dishes or cookware are provided in the Pixie cabin. Outside, there is a fire pit (campfire wood provided) and picnic table. The wood stove heats the cabin in winter, and wood is available nearby in the wood shed. Restrooms are nearby and are composting (CTS) toilets.





## Seasonal Sleeping Spaces

### Adirondack Units

Twin Hills has 7 seasonal Adirondacks - three sided shelters. Adirondacks at Twin Hills are named for local mountains, and for the historic Adirondack names campers used. Four shelters, Bear, Fox Cobble, Ellen, and Katie, have a screened in front and screen door. Suitable for sleeping 10-12 smaller campers, or 5-10 older girls, the Adirondacks are placed far enough apart to be individual shelters for troops, and some are located close for a troop to use together. All units have picnic tables, a fire pit with nearby campfire wood, benches, and are near flush or composting toilets.



## Seasonal Spaces

### Pavilion

The pavilion has electricity and lights, a refrigerator, sink, and electric cook top, and an old stone fireplace. Unique top-open window covers on all four sides of the building can be closed to keep in heat, or can be opened to create the open-air pavilion experience the building is named for.



**More photos coming soon.**



# Property Amenities

## Fire Circle

The main fire circle allows groups of Girl Scouts to gather for sing alongs or to share skits, stories and s'mores. Campfire wood is provided in the nearby woodshed.



## GaGa Pit

GaGa is a popular game! Using a playground ball, girls start at the walls of the GaGa pit, then roll the ball to try to get each other “out.” The ball has to roll and stay below the knees!



## Nature Trail

The nature trail is a guided trail with informative signs and activities to explore the amazing natural place you are in! Hike it in the daytime - and then hike it at night!



## Badge Activity Center

Badge activity centers at camp show a badge that can be worked on while on property without any extra materials! Badges change seasonally, and are located throughout the camp.





# Specialist Activities

## Archery Range

(Open April 15 - October 15)

Rent with our facilitator or provide your own qualified instructor. Rental fee includes bows, arrows, targets, and armguards.

**Photo coming soon.**





## Equipment Rentals

Equipment can be rented for use at Camp Twin Hills for a nominal fee. The following equipment is available:

Eureka 4-person Tents	\$10 per tent	Geocaching Kit (includes one GPS unit)	\$10
Troop Cook Kit	\$10 per kit	GPS Units	\$5 per GPS
Jackknife Kit (contains 12 jackknives)	\$10	Bird Behaviors Kit (includes 6 binoculars)	\$10
Compass/Orienteering Kit (contains 12 compasses)	\$10	Snowshoes	\$5 per set

## Overnight Rental Fees

Rental fees are listed on the GSGWM Troop Camping Reservation Form. Overnight rentals are from 5:00 PM to 11:00 AM each night; rentals over consecutive days include the period from 11:00 AM to 5:00 PM between rentals.

Rental of each sleeping building or unit comes with a fire circle, campfire wood, and includes use of exclusive or shared restrooms and water source (except primitive sites).

Common areas in camp (pavilions, main campfire rings, playing fields, GaGa pit, etc.) are shared between all rental groups staying overnight. Please supervise your Girl Scouts in these shared areas and encourage your Girl Scouts to use words and show actions that follow the Girl Scout Promise and Law.

Rental of Specialist Activity Areas is limited to the times your group has reserved them for; and multiple groups on property may have multiple rentals at different times.

Rented equipment will be left for you at your rental space; please return them clean and dry in your rental space when you leave.

### Buildings:

Pixie Cabin	\$85	Pavilion	\$45
-------------	------	----------	------

### Screened Adirondacks:

Bear	\$35
Fox Cobble	\$35
Ellen	\$35
Katie	\$35

### Unscreened Adirondacks:

Phred	\$15
Wralph	\$15
Harold	\$15





Girls get ready to camp in the platform tents at Camp Farnsworth



**girl scouts**   
of the green and  
white mountains

1 Commerce Drive  
Bedford, NH 03110-6835  
888-474-9686  
[girlscoutsgwm.org](http://girlscoutsgwm.org)